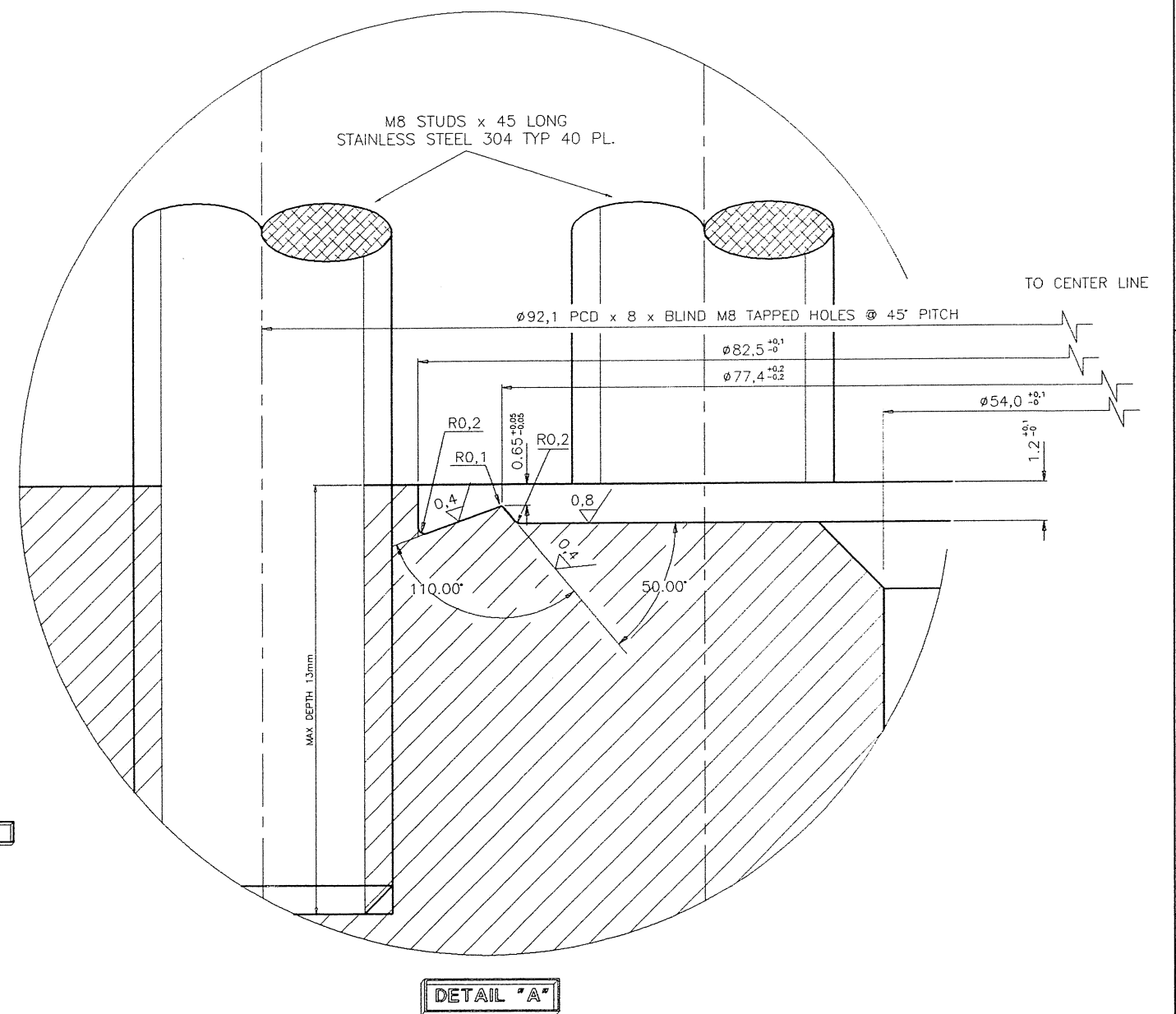
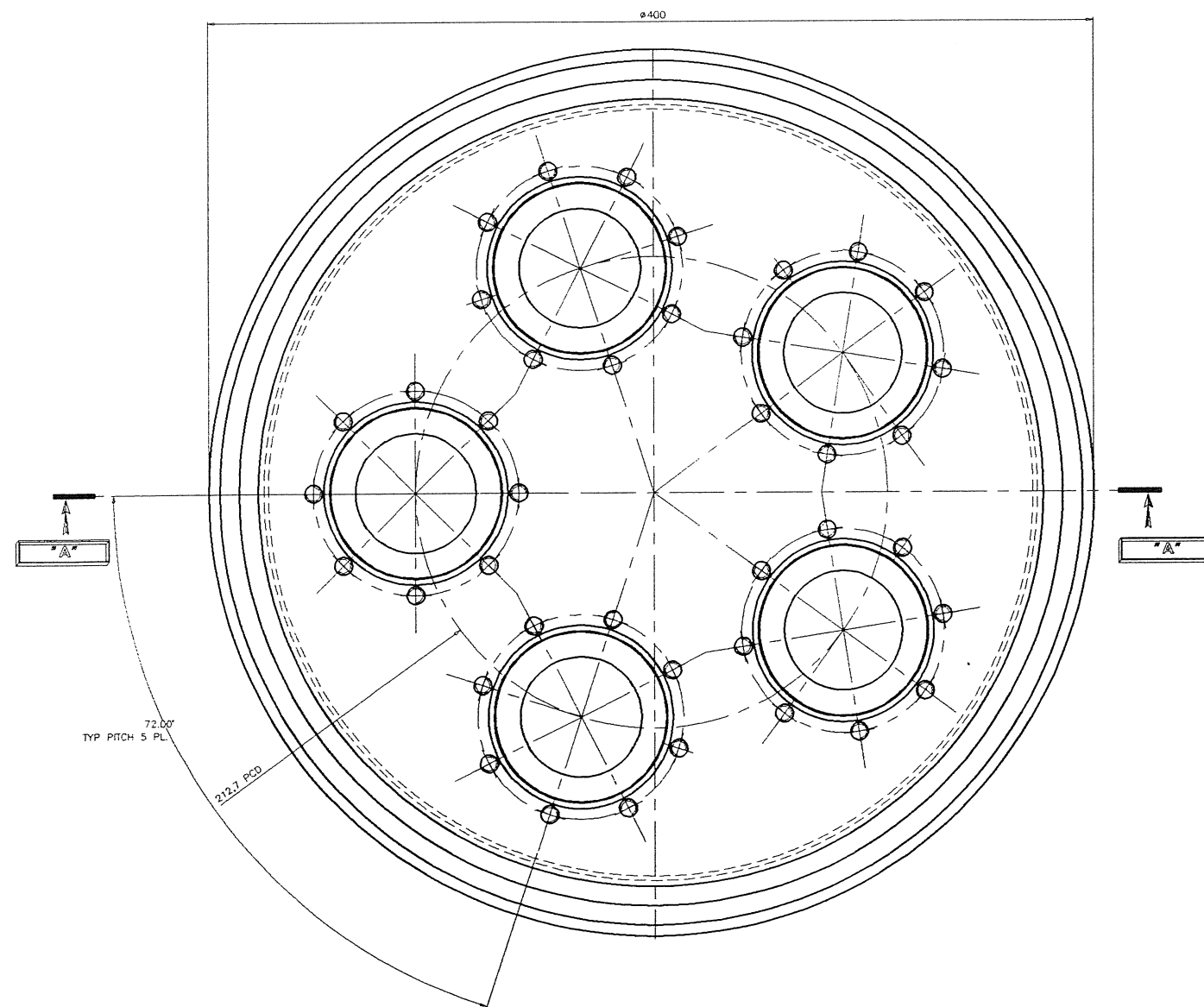


NOTE:
THIS SURFACE MUST BE KEPT
SCRATCH FREE FOR VACUUM
SEALING PURPOSES.
IF THIS SURFACE IS SCRATCHED
THIS BLANK FLANGE WOULD BE
DESTROYED.

SECTION A-A



NOTES: (UNLESS OTHERWISE STATED)		MATERIAL:	TOLERANCES UNLESS OTHERWISE STATED							
1) REMOVE ALL BURRS & SHARP EDGES TO 0,5x45° MAX.	4) ALL INTERNAL RADII 0,8 MAX.		LINEAR	0	21	201	1001	3001	ANGLES	±1°
2) SCREW THREADS TO ISO 261				TO	TO	TO	TO	TO		
3) SURFACE TEXTURE: (Ra TO ISO 1302)				20	200	1000	3000	∞		
3,2 ✓				±0,5	±1	±2	±3	±5		

KEY	DRAWING STATUS	ACTIVE:	SIGN:	DATE:
	INFORMATION ONLY			
	FOR 3rd. PARTY APPROVAL			
	PERMIT MATERIAL ORDER			
	FOR MANUFACTURE			
	AS BUILT			
	SUPERSEDED			

		-						
		-						
		-						
		-						
	A	-	ID				92-10-21	TO SABS 0111
REVISION DETAILS	ISS	C/NOTE	DRAWN	CHECK	APPR	P.OFF.	DATE	DISC NO/FILE NAME VTFOA12J

TO SABS 0111

IST

TITLE : MULTI PORT ISO-K 350
FLANGE MACHINING DETAIL

ISSUE	A							
-------	---	--	--	--	--	--	--	--

DRG NO : VTFO-12900-122	SHT 1 OF 1
SCALE : 1:2	WHEN PLOTTED ON UNLESS OTHERWISE STATED

A2